

420d Nylon Waist Pouch Bag Phone Practical For Men Women Sport 26X8X12.5"

Our Product Introduction

Basic Information

- Place of Origin: CHINA
- Brand Name: OEM or ODM
- Certification: BSCI, DISNEY, ISO9001
- Model Number: YB10680
- Minimum Order Quantity: 500pcs
- Price: negotiable
- Packaging Details: 1 pc bag put into 1 pc PE bag, 15 pcs each carton or customized design packaging
- Delivery Time: 30-35 Working days
- Payment Terms: negotiable
- Supply Ability: 500000pcs per month

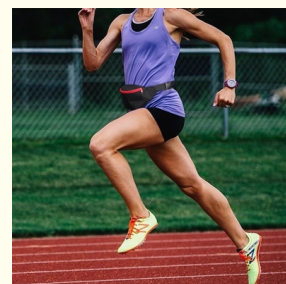


Product Specification

- Product Name: Waist Bag
- Material: 420 Nylon Or Customized
- Size: 26*8*12.5 CM Or Customized
- Color: Black Or Customized
- Logo: Printing, Woven Label Or Customized
- Sample Time: 7-10 Working Days
- OEM/ODM: Welcomed
- Highlight: 14.5x3x15cm phone pouch waist bag, phone pouch waist bag 14.5x3x15cm, sport bag waist pouch



More Images



Product Description

Cute Pink Fanny Pack Waist Pouch Bag Practical Crossbody for Women

Features

- Waterproof nylon material, look smooth and textured.
- Anti-water, easy to clean and better protect your stuff.
- Strong and smooth zipper, will not stuck when you use it.
- Small and cute size, enough for your keys, cell phone and earphone cable.
- Adjustable elastic waist belt can be expanded to the desired length to fit your waist
- Perfect for various activities such as walking, cycling, hiking and so on.

Description

| | |
|-----------------|--|
| Product Type | Waist bag |
| Material | 420 Nylon or Customized |
| Size | 26X8X12.5 Inch or Customized |
| Color | Black & Customized color |
| Logo | Printing, Woven label, Debossed PU patch, Rubber patch, Embroidery etc. |
| Packing | 1pc/PE bag or Custom packing acceptable |
| Sample time | 5-7 working days |
| Production time | 30-35 working days |
| Payment term | T/T, Paypal, L/C (Normally 30%deposit, 70%balance payment before shipping) |

Style Customization

Develop a design plan - Sign a contract - Accomplish - Product inspection - Well-built

Note: The size and the color can be customized according to customer requirements.

ODM/OEM

PROFESSIONAL PROCESSING CUSTOMIZATION

ABOUT LOGO CUSTOMIZED BUILDING YOUR BRAND



SILK SCREEN
PRINTING



SILVER STAMPING



DEBOSSED



GOLD STAMPING



RUBBER PATCH



EMBROIDERY



EMBROIDERY
PATCH



METAL PLATE



RUBBER ZIPPER
PULLER



METAL DEBOSSED
ZIPPER PULLER



WASHING CARE
LABEL



WOVEN LABEL

Pickup fabric and color swatch

Technical drawing of a bag with dimensions and labels. The drawing includes a side view of the bag with dimensions: 420 (width), 180 (height), and 100 (depth). Labels include: 1. 100 (depth), 2. 180 (height), 3. 420 (width), 4. 100 (depth), 5. 180 (height), 6. 420 (width), 7. 100 (depth), 8. 180 (height), 9. 420 (width), 10. 100 (depth), 11. 180 (height), 12. 420 (width), 13. 100 (depth), 14. 180 (height), 15. 420 (width), 16. 100 (depth), 17. 180 (height), 18. 420 (width), 19. 100 (depth), 20. 180 (height), 21. 420 (width), 22. 100 (depth), 23. 180 (height), 24. 420 (width), 25. 100 (depth), 26. 180 (height), 27. 420 (width), 28. 100 (depth), 29. 180 (height), 30. 420 (width), 31. 100 (depth), 32. 180 (height), 33. 420 (width), 34. 100 (depth), 35. 180 (height), 36. 420 (width), 37. 100 (depth), 38. 180 (height), 39. 420 (width), 40. 100 (depth), 41. 180 (height), 42. 420 (width), 43. 100 (depth), 44. 180 (height), 45. 420 (width), 46. 100 (depth), 47. 180 (height), 48. 420 (width), 49. 100 (depth), 50. 180 (height), 51. 420 (width), 52. 100 (depth), 53. 180 (height), 54. 420 (width), 55. 100 (depth), 56. 180 (height), 57. 420 (width), 58. 100 (depth), 59. 180 (height), 60. 420 (width), 61. 100 (depth), 62. 180 (height), 63. 420 (width), 64. 100 (depth), 65. 180 (height), 66. 420 (width), 67. 100 (depth), 68. 180 (height), 69. 420 (width), 70. 100 (depth), 71. 180 (height), 72. 420 (width), 73. 100 (depth), 74. 180 (height), 75. 420 (width), 76. 100 (depth), 77. 180 (height), 78. 420 (width), 79. 100 (depth), 80. 180 (height), 81. 420 (width), 82. 100 (depth), 83. 180 (height), 84. 420 (width), 85. 100 (depth), 86. 180 (height), 87. 420 (width), 88. 100 (depth), 89. 180 (height), 90. 420 (width), 91. 100 (depth), 92. 180 (height), 93. 420 (width), 94. 100 (depth), 95. 180 (height), 96. 420 (width), 97. 100 (depth), 98. 180 (height), 99. 420 (width), 100. 100 (depth), 101. 180 (height), 102. 420 (width), 103. 100 (depth), 104. 180 (height), 105. 420 (width), 106. 100 (depth), 107. 180 (height), 108. 420 (width), 109. 100 (depth), 110. 180 (height), 111. 420 (width), 112. 100 (depth), 113. 180 (height), 114. 420 (width), 115. 100 (depth), 116. 180 (height), 117. 420 (width), 118. 100 (depth), 119. 180 (height), 120. 420 (width), 121. 100 (depth), 122. 180 (height), 123. 420 (width), 124. 100 (depth), 125. 180 (height), 126. 420 (width), 127. 100 (depth), 128. 180 (height), 129. 420 (width), 130. 100 (depth), 131. 180 (height), 132. 420 (width), 133. 100 (depth), 134. 180 (height), 135. 420 (width), 136. 100 (depth), 137. 180 (height), 138. 420 (width), 139. 100 (depth), 140. 180 (height), 141. 420 (width), 142. 100 (depth), 143. 180 (height), 144. 420 (width), 145. 100 (depth), 146. 180 (height), 147. 420 (width), 148. 100 (depth), 149. 180 (height), 150. 420 (width), 151. 100 (depth), 152. 180 (height), 153. 420 (width), 154. 100 (depth), 155. 180 (height), 156. 420 (width), 157. 100 (depth), 158. 180 (height), 159. 420 (width), 160. 100 (depth), 161. 180 (height), 162. 420 (width), 163. 100 (depth), 164. 180 (height), 165. 420 (width), 166. 100 (depth), 167. 180 (height), 168. 420 (width), 169. 100 (depth), 170. 180 (height), 171. 420 (width), 172. 100 (depth), 173. 180 (height), 174. 420 (width), 175. 100 (depth), 176. 180 (height), 177. 420 (width), 178. 100 (depth), 179. 180 (height), 180. 420 (width), 181. 100 (depth), 182. 180 (height), 183. 420 (width), 184. 100 (depth), 185. 180 (height), 186. 420 (width), 187. 100 (depth), 188. 180 (height), 189. 420 (width), 190. 100 (depth), 191. 180 (height), 192. 420 (width), 193. 100 (depth), 194. 180 (height), 195. 420 (width), 196. 100 (depth), 197. 180 (height), 198. 420 (width), 199. 100 (depth), 200. 180 (height), 201. 420 (width), 202. 100 (depth), 203. 180 (height), 204. 420 (width), 205. 100 (depth), 206. 180 (height), 207. 420 (width), 208. 100 (depth), 209. 180 (height), 210. 420 (width), 211. 100 (depth), 212. 180 (height), 213. 420 (width), 214. 100 (depth), 215. 180 (height), 216. 420 (width), 217. 100 (depth), 218. 180 (height), 219. 420 (width), 220. 100 (depth), 221. 180 (height), 222. 420 (width), 223. 100 (depth), 224. 180 (height), 225. 420 (width), 226. 100 (depth), 227. 180 (height), 228. 420 (width), 229. 100 (depth), 230. 180 (height), 231. 420 (width), 232. 100 (depth), 233. 180 (height), 234. 420 (width), 235. 100 (depth), 236. 180 (height), 237. 420 (width), 238. 100 (depth), 239. 180 (height), 240. 420 (width), 241. 100 (depth), 242. 180 (height), 243. 420 (width), 244. 100 (depth), 245. 180 (height), 246. 420 (width), 247. 100 (depth), 248. 180 (height), 249. 420 (width), 250. 100 (depth), 251. 180 (height), 252. 420 (width), 253. 100 (depth), 254. 180 (height), 255. 420 (width), 256. 100 (depth), 257. 180 (height), 258. 420 (width), 259. 100 (depth), 260. 180 (height), 261. 420 (width), 262. 100 (depth), 263. 180 (height), 264. 420 (width), 265. 100 (depth), 266. 180 (height), 267. 420 (width), 268. 100 (depth), 269. 180 (height), 270. 420 (width), 271. 100 (depth), 272. 180 (height), 273. 420 (width), 274. 100 (depth), 275. 180 (height), 276. 420 (width), 277. 100 (depth), 278. 180 (height), 279. 420 (width), 280. 100 (depth), 281. 180 (height), 282. 420 (width), 283. 100 (depth), 284. 180 (height), 285. 420 (width), 286. 100 (depth), 287. 180 (height), 288. 420 (width), 289. 100 (depth), 290. 180 (height), 291. 420 (width), 292. 100 (depth), 293. 180 (height), 294. 420 (width), 295. 100 (depth), 296. 180 (height), 297. 420 (width), 298. 100 (depth), 299. 180 (height), 300. 420 (width), 301. 100 (depth), 302. 180 (height), 303. 420 (width), 304. 100 (depth), 305. 180 (height), 306. 420 (width), 307. 100 (depth), 308. 180 (height), 309. 420 (width), 310. 100 (depth), 311. 180 (height), 312. 420 (width), 313. 100 (depth), 314. 180 (height), 315. 420 (width), 316. 100 (depth), 317. 180 (height), 318. 420 (width), 319. 100 (depth), 320. 180 (height), 321. 420 (width), 322. 100 (depth), 323. 180 (height), 324. 420 (width), 325. 100 (depth), 326. 180 (height), 327. 420 (width), 328. 100 (depth), 329. 180 (height), 330. 420 (width), 331. 100 (depth), 332. 180 (height), 333. 420 (width), 334. 100 (depth), 335. 180 (height), 336. 420 (width), 337. 100 (depth), 338. 180 (height), 339. 420 (width), 340. 100 (depth), 341. 180 (height), 342. 420 (width), 343. 100 (depth), 344. 180 (height), 345. 420 (width),

A semi-circular color calibration chart, often called a Munsell Color Services Lab chart, is shown. It features a wide range of color patches arranged in a fan shape, covering the visible spectrum from reds and oranges to blues and greens. A color calibration target, which includes a series of color bars and a grayscale step wedge, is placed over the center of the chart.

A collage of various colored and textured fabrics. The top row shows smooth, solid-colored fabrics in shades of yellow, orange, red, pink, blue, and grey. The middle row features a variety of textures, including a red and orange woven fabric, a grey and green knitted fabric, and a blue and grey woven fabric. The bottom row displays a mix of colors and textures, including a green and pink woven fabric, a blue and grey woven fabric, and a brown and purple woven fabric.

Our Advantage
 15 years waist bag or other bag experience, provide you our best business experience.
 Well trained workers can give you the highest quality bag.
 Over than 500 workers, can finish your orders on time.
 Professional Designer, can help you make your own design and logo.
 Many materials and color options, can meet all your requirements.
 Strict QC process, none defect product will be passed to clients.





FAQ

Q: Are you a manufacturer factory or a trading company?

A: We are direct OEM & ODM manufacturer factory and exporter.

Q: Can I get a sample first?

A: Yes, the sample can be provide based on your requirements.

Q: What materials can I choose for bag?

A: We can do large kind of various, materials, and different materials have different features and costs, please contact with us to check directly.

Q: Could you provide the design for me?

A: Custom designs are welcomed! The bag struture material, quantity and packaging are all the factors could affect the price, please conact with us directly.

Q: How do you ensure the quality?

A: We control the quality from in-material / accessories / online QC / final products QC/ QC before shipping, and we do 100%quality control for our customers, we also accept 3rd party inspection institution you assigned to test.



Shenzhen Yu Chuang Wei Industrial Co., Ltd.



8613632735296



mirror@szycw918.com



travelling-bags.com

No. 76, Zhangbei Road, Longgang District, Shenzhen, 518172, Guangdong, China.